

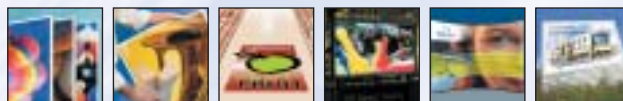
The SEAL 80 Pro is an 80"/2m wide mounter, laminator and encapsulator based on the already proven design of the SEAL 62 Pro. With fully adjustable temperature, speed and pressure settings, the 80 Pro is ideal for the more experienced finisher requiring a highly versatile laminator.

The SEAL 80 Pro is capable of running a wide range of media and can generate high process speeds and pressure, which makes this machine ideal for businesses that are looking to build in extra capacity and more versatility. Capable of mounting, laminating and encapsulating prints up to 80" (2m), the machine can be used with a wide range of SEAL laminating films, adhesives and substrates.

The 80 Pro features unique design elements such as: an ergonomic touch pad control panel on a pivoting arm for ease of use; a new feed table which incorporates built-in tensioning rollers and a flip down image guide for smooth and optimum infeed of media; and outfeed slitters to trim the output to size. These new features maximise the performance and versatility of the 80 Pro without compromising its user friendly nature.



The 80 Pro is ideal for producing a wide variety of applications:



Rigid Displays Flexible Displays Floor Graphics Backlit Displays Pop-Up Displays Outdoor Signage

The SEAL 80 Pro provides the following features:

Ease of Use

- Adjustable settings for increased capacity and versatility
- Feed table with built-in tensioning rollers and a flip down image guide for smooth and optimum infeed of media
- Flip-up pull rollers for flatter results when encapsulating and for uninterrupted access when not encapsulating
- Manual nip-adjustment for precise operation
- 1 1/2" (38 mm) nip opening for processing a wide range of substrates
- Variable roller technology for better processing of soft substrates
- 2.5n/mm line pressure for superior cold lamination
- Combi-supply shafts for maximum flexibility
- Automatic cooling fans for long runs and extended operations

Optimum Performance

- Ergonomic touch pad control panel on a pivot arm enabling operation from the front or rear of the machine
- Output slitters to trim image to size during operation
- Integrated roll/image trough built into feed table
- High release silicone rollers for easy cleaning
- Drop-in supply shafts with *autogrip* technology or easy loading of materials
- New design for swing up feed table to aid media handling and set-up
- Simple film tension adjustment
- Automatic upper take-up shaft for removing release liners
- Roll-to-roll capability

Safety

- Foot switch for hands free operation
- Trip cord for operator safety
- Comprehensive safety system with emergency stops and self-checking safety eyes
- CE certified

Ideal Films for the 80 Pro:

- Print Shield Std UV
 - Print Mount White
 - Print Mount Plus
- Available in 79" rolls*

SEAL® 80 Pro

SPECIFICATIONS

Specifications	80 Pro
Max. Working Width	80" (2000 mm)
Max. Speed	20 ft/min (6 m/min)
Max Substrate Thickness	1 1/2" (38 mm)
Max. Roller Temperature	284° F (140°C)
Roller Heating	Dual
Dimensions	Width: 105" (2667 mm) Depth: 25" (634 mm) Height: 65" (1654 mm)
Net Weight	1720 lbs. (780 kg)
Shipping Dimensions	Width: 107" (2710 mm) Depth: 35 1/2" (900 mm) Height: 66 1/2" (1690 mm)
Shipping Weight	1850 lbs. (840 kg)
Electrical Requirements	1N/PE 230VAC +/-10% 50/60 Hz, 40A
Order Code	64241

Ideal films for Seal 80 Pro

Over-laminating Films

Print Shield Standard UV - Gloss
62207 79" x 164"

Print Shield Standard UV - Matte
62227 79" x 164"

Mounting Adhesives

Print Mount White
62007 79" x 200'

Print Mount Plus
4130 79" x 164'



Ergonomic touch pad control panel on a pivot arm.



Feed table with built-in tensioning rollers and a flip-down image guide.



Output slitters, cooling fans, flip-up pull rollers.

Note: SEAL® recommends that your main power be installed by a licensed electrician in accordance with electrical codes in your area. Specifications subject to change without notice. Main power must be wired to specification of model ordered.

Seal Graphics Americas Corporation
7091 Troy Hill Drive
Elkridge, MD 21075
Tel: 410-379-5400
Fax: 410-579-8960

Seal Graphics Canada
1601 Matheson Blvd. E.
Mississauga, Ontario
Canada, L4W 1H9
Tel: 905-212-9232
Fax: 905-212-9313

Seal Graphics U.K. Ltd
1 Watkins Close
Burnt Mills Industrial Estate
Basildon, Essex SS13 1TL
United Kingdom
Tel: +44 1268 530 331
Fax: +44 1268 725 864

Seal Graphics Europe BV
Kanaaldijk O.Z.3
P.O.Box 29,
8100 AA Raalte
The Netherlands
Tel: +31 572 345 500
Fax: +31 572 345 501

Seal Graphics Pacific Limited
Unit A, 13th Floor, Block 1
Leader Industrial Centre
Tsuen Wan,
New Territories, Hong Kong
Tel: +852 2407 3738
Fax: +852 2408 0973



Contact your local distributor:


Seal Brands...the finishing touch
www.sealgraphics.com

©2004 SEAL Graphics
80 Pro-02.04

