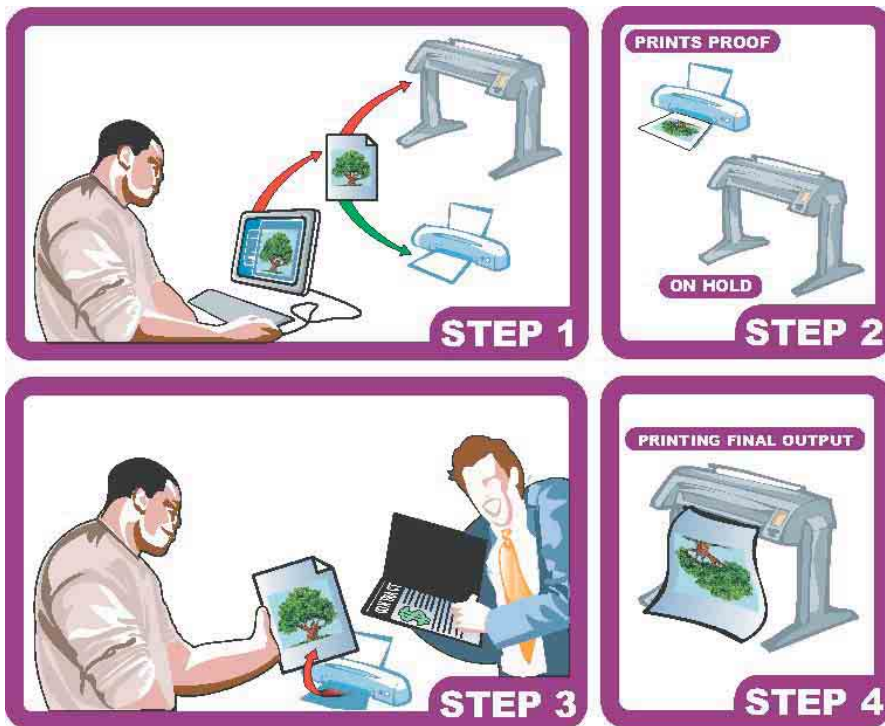


In-House Contract Proofing

In-House / Contract Proofing

It's about time contract proofing reached the large-format industry, and now you can have the competitive advantage. Onyx ProductionHouse 6.0 includes a suite of proofing tools. These new tools give you the ability to make quick and accurate color proofs of print jobs before they go to your production printers. These color proofs not only save you valuable production time, but also are a valuable service to your print customers.



An Effortless Four-Step Process

1. **Submit the job.**
2. **ProductionHouse automatically prints a contract proof.**
3. **Obtain approval on the contract proof.**
4. **Enter production.**

With the Onyx In-House Proofing Solution, you simply submit your job to the final output printer just as you normally would – you don't even have to think about the proofing printer. Onyx ProductionHouse automatically configures and sends the job to a proofing printer to create a contract proof and puts the job "on hold for proof". This means no breaks in productivity while you're waiting for a client to approve the color. After you've showed your client the contract proof, make any required color corrections before you go to production. Once you obtain final approval on the contract proof, take the hold off of the job so it can print the final. It's that easy!

Features and Benefits

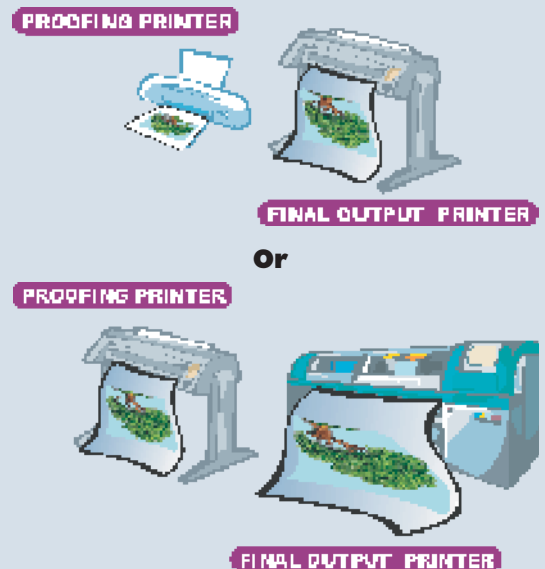
- ◆ Increase revenue by providing contract proofs
- ◆ Keep production at its peak - there's no interruptions
- ◆ Save time, money, and resources with an automatic workflow
- ◆ Verify the proof and ensure your proofing printer is producing accurate output...before you tie up your production printer
- ◆ Greatly reduce costs: Stop running jobs with the wrong color and wasting expensive media and ink – with Onyx ProductionHouse, you won't ever have a final job rejected again

Simple Setup

In order to proof an image, Onyx ProductionHouse requires that you have a minimum of two active printers. These will act as your final output printer and your proofing printer. Your final output printer is the printer on which you wish to print the final image; the proofing printer is the printer on which you will "test" your image. This allows you to review a smaller representation of your image without wasting the ink and media of the final output printer.

Proof Any Printer on Any Other Printer*

Proof your large format printer on a desktop printer. Or proof your grand format printer on your large format printer. The possibilities are endless. You decide which configuration is best for your environment.



* Color gamut of Proof device must be larger than final output

In-House Contract Proofing Tools

Onyx In-House Contract Proofing is standard in Onyx ProductionHouse; Optional in Onyx PosterShop and Onyx RIPCenter.

Recommended RIP

Onyx[®] ProductionHouse[™]

Onyx ProductionHouse offers:

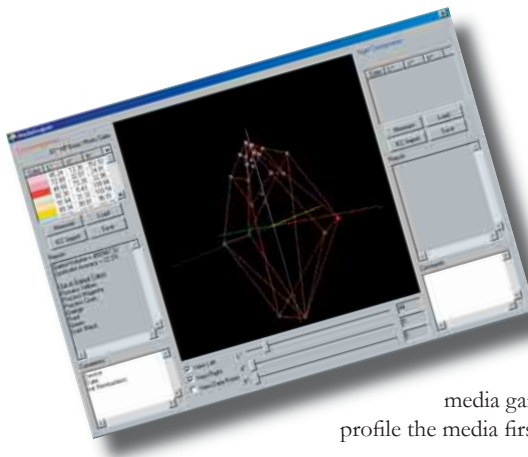
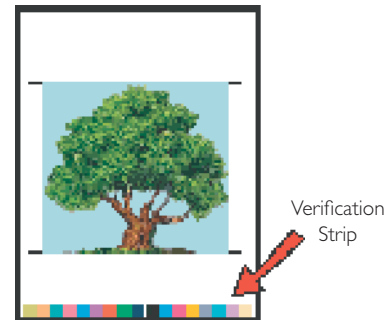
- ◆ Universal Workflow
- ◆ Integrated Color Management
- ◆ Increased Productivity (with visual previews, RIP and print simultaneously features, and more)
- ◆ Award-winning color (such as easy calibration of any media substrate, ink control, and consistent color over different brands)
- ◆ And much more!

For further information regarding Onyx ProductionHouse, talk to your authorized Onyx Graphics reseller or logon to www.onyxfx.com.

Verification Strip

Automatically prints a verification strip at the bottom of the job to determine if your proofing printer's output is accurate.

You can even verify the accuracy of your proofs with or without a color measurement device.



Media Analyzer Tool

This tool lets you view and compare two media color gamuts in 3-D animation. With this tool you can see how well your proofing media can simulate your output device.

The tool also can help you qualify media, compare media, and measure media gamuts all without having to calibrate or profile the media first.

Profile Analysis Reports

This tool in Media Manager provides comprehensive color matching analysis and gamut analysis reports of any ICC profile.

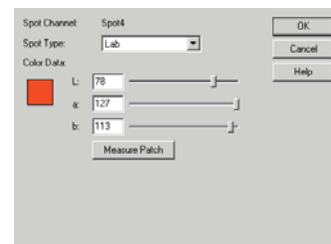
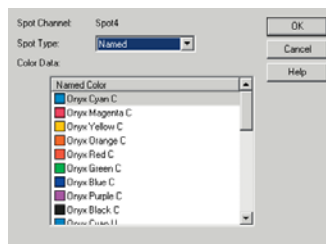
No more wondering if you can really hit spot colors. The color matching analysis report will show you precisely how close ICC profiles can match your named spot colors. So without having to print a single drop of ink, the color matching report can tell you if you can match your spot colors and how close they will match.



The ICC profile gamut analysis report tells you if there are any problems with your ICC profile as well as an overall summary of the gamut based on hue region and volume.

PostScript Separation Proofing

This proofing tool lets you simulate any PostScript separation's spot channel on any printer. With the easy Spot Channel Replacement tool, you can map any PostScript separation channel to any named spot color, lab value, or ink in your printer.



YOUR AUTHORIZED ONYX DEALER



©2003 Onyx Graphics. All rights reserved. PosterShop, Onyx, and the Onyx glyph are registered trademarks of Onyx Graphics. ProductionHouse is a trademark of Onyx Graphics. PostScript is a registered trademark of Adobe Systems Incorporated. All other product names, company names, marks, logos, and symbols referenced herein may be the trademarks or registered trademarks of their respective owners. Features of products are subject to change.

Onyx Graphics | 6915 S. High Tech Dr. | Midvale, UT 84047
Toll-free 800.828.0723 | 801.568.9900 | Fax 801.568.9911 | www.onyxfx.com